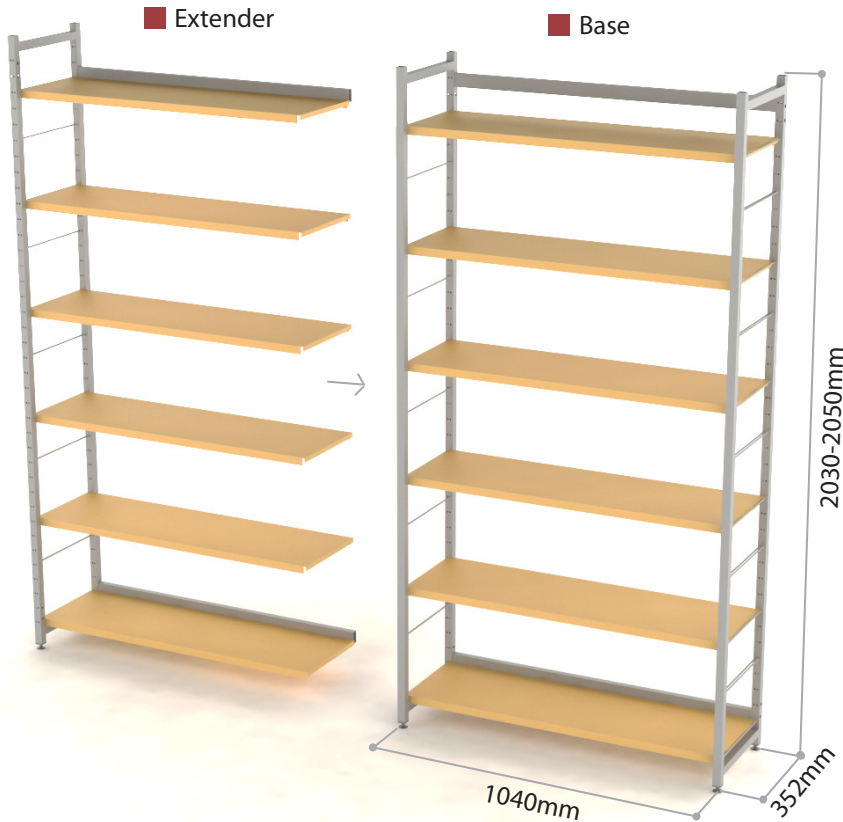


# Storage Solution

Version 18.10

An easy mountable and a very flexible storage solution. Its perfect for office use as the width is exactly made for an A4 Folder. However it can also find its place in any other place where storage is necessary - garages, shops, laboratories etc.

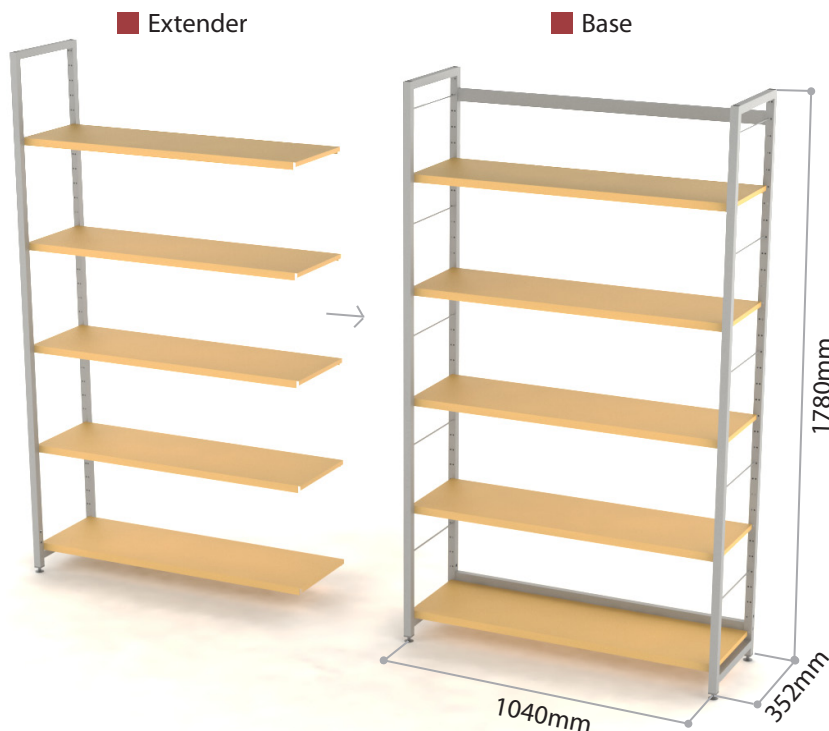
## Heavy Load (HL) - Universal



- A Shelf can hold up to **60kg** so **6 shelves** have a total capacity of **360kg** and **6m** storage space
- Perforation allows these standards: **175/225mm** Box size) or **275/325mm** (A4 Folder Sizes)
- Adjustable Feet
- Available as **Double Frame**



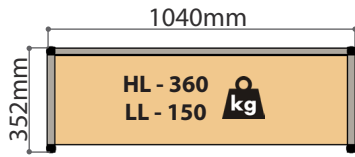
## Light Load (LL) - Office Storage



- A Shelf can hold up to **30kg** so **5 shelves** have a total capacity of **150kg** and **5m** storage space
- Perforation allows these standards: **175/225mm** Box size) or **275/325mm** (A4 Folder Sizes)

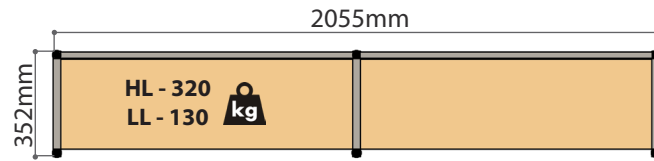
## Examples

### Single



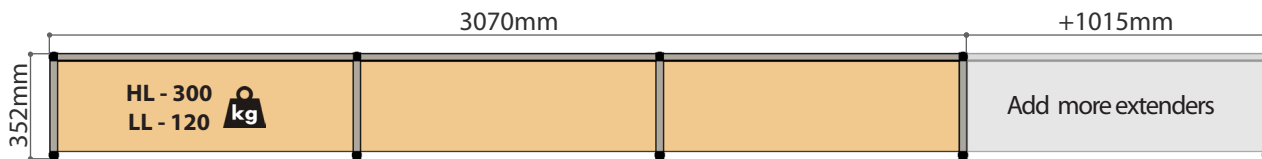
Product Code	Quantity
.MD.AR.H.S.BASE.	1

### Single + Extender



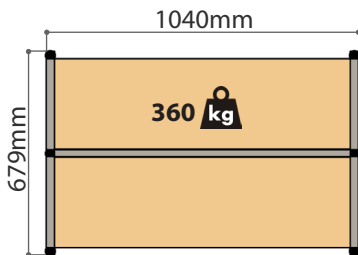
Product Code	Quantity
.MD.AR.H.S.BASE.HL	1
.MD.AR.H.S.EXT.HL	1

### Single + 2x Extenders



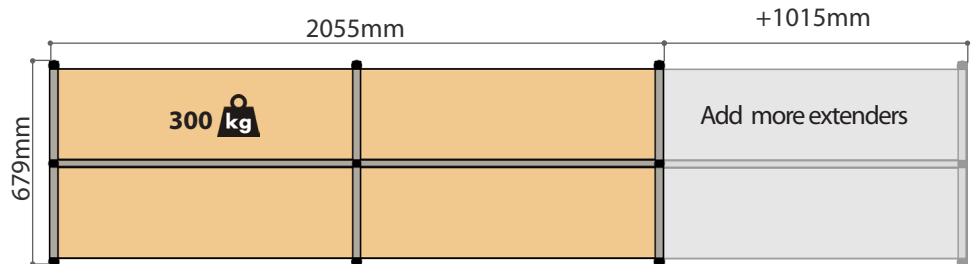
Product Code	Quantity
.MD.AR.H.S.BASE.HL	1
.MD.AR.H.S.EXT.HL	2

### Double



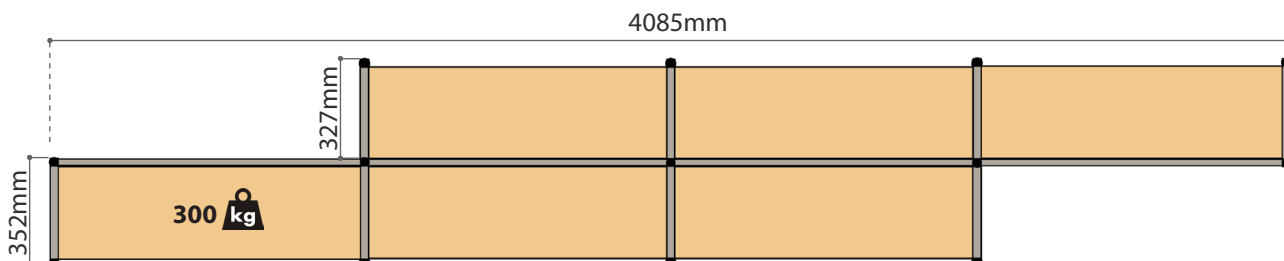
Product Code	Quantity
.MD.AR.H.D.BASE.HL	1

### Double + Extender



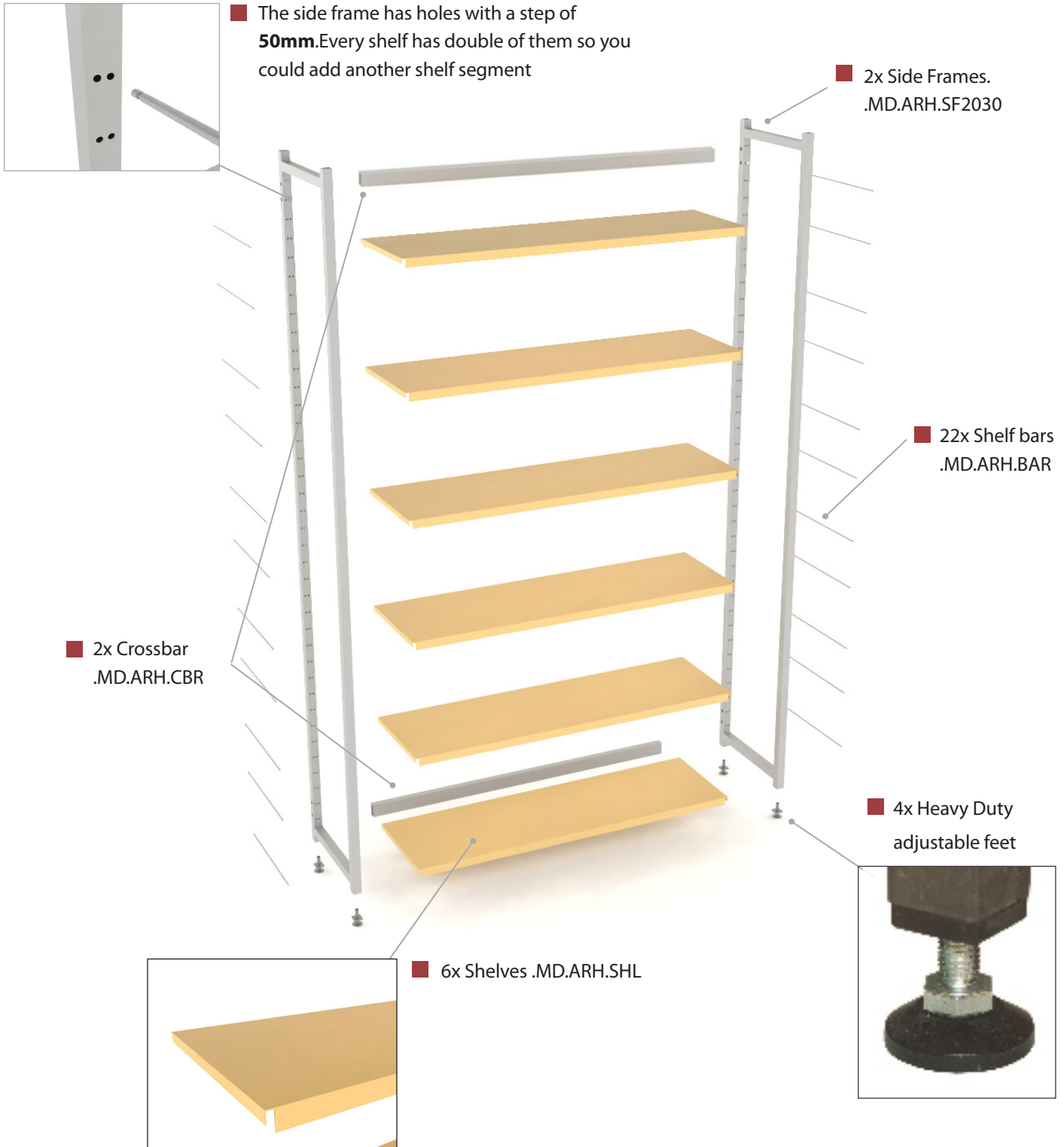
Product Code	Quantity
.MD.AR.H.D.BASE.HL	1
.MD.AR.H.D.EXT.HL	2

### Combine : Double + Single



Product Code	Quantity
.MD.AR.H.S.EXT.HL	2
.MD.AR.H.D.BASE.HL	1
.MD.AR.H.D.EXT.HL	1

The base single element ( .MD.ARH.S.BASE.HL) consists of these elements



## Side Frames

Single and Double



Product Code	Width	Height
.MD.ARH.SF2030	352mm	2030mm
.MD.ARH.SF1785	352mm	1785mm
.MD.ARH.DF2030	679mm	2030mm

## Shelf bars



Product Code	Width
.MD.ARH.BAR	302mm

## Shelves



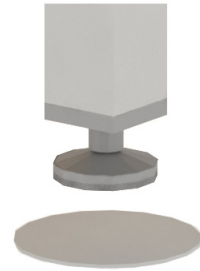
Product Code	Width	Length
<b>Standard Load - 60 kg</b>		
.MD.ARH.SHL	298mm	1015mm
<b>Light Load - 30 kg</b>		
.MD.ARH.SLL	298mm	1015mm

## Crossbar



Product Code	Width
.MD.ARH.CBR	1000mm

## Extra Feet Plates

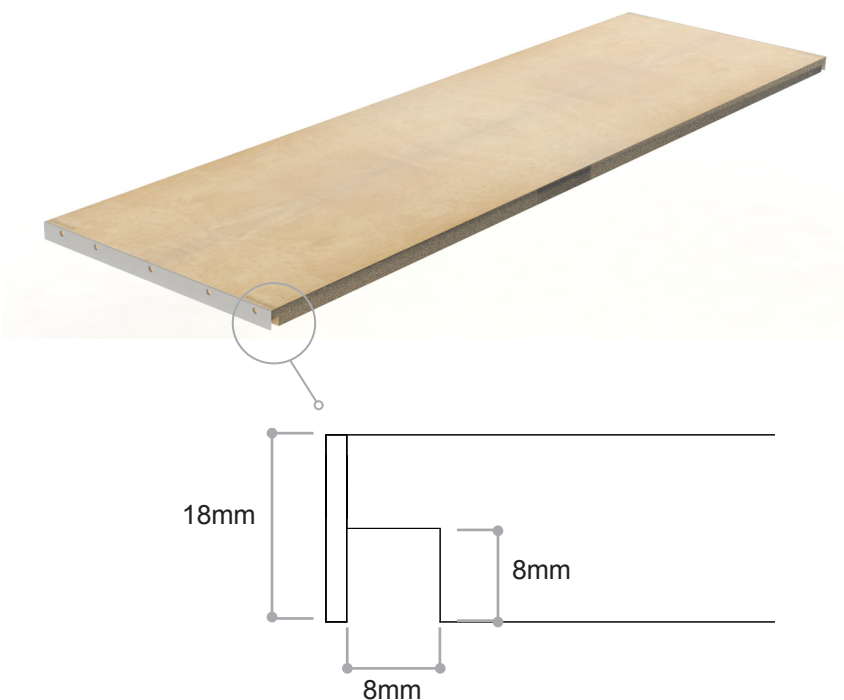


For long and heavy racks you have to keep in mind about the heavy load the floor is holding. These plates help to distribute the load.

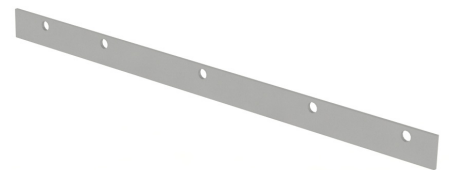
Product Code	Size
.MD.ARH.PLA	D=50mm

## Wooden Shelves

Its possible to order just the frames, fittings and with the help of our adapter build your own wooden shelves.

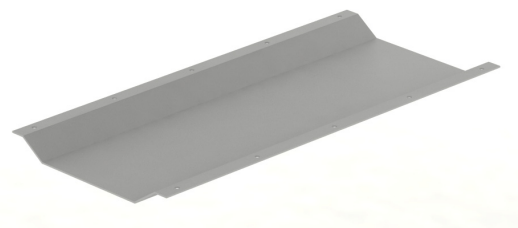


## Side Adapter



Product Code	Size
.MD.ARH.ADA	298mm

## Stiffness Rib



Product Code	Size
.MD.ARH.RIB	145x545mm